



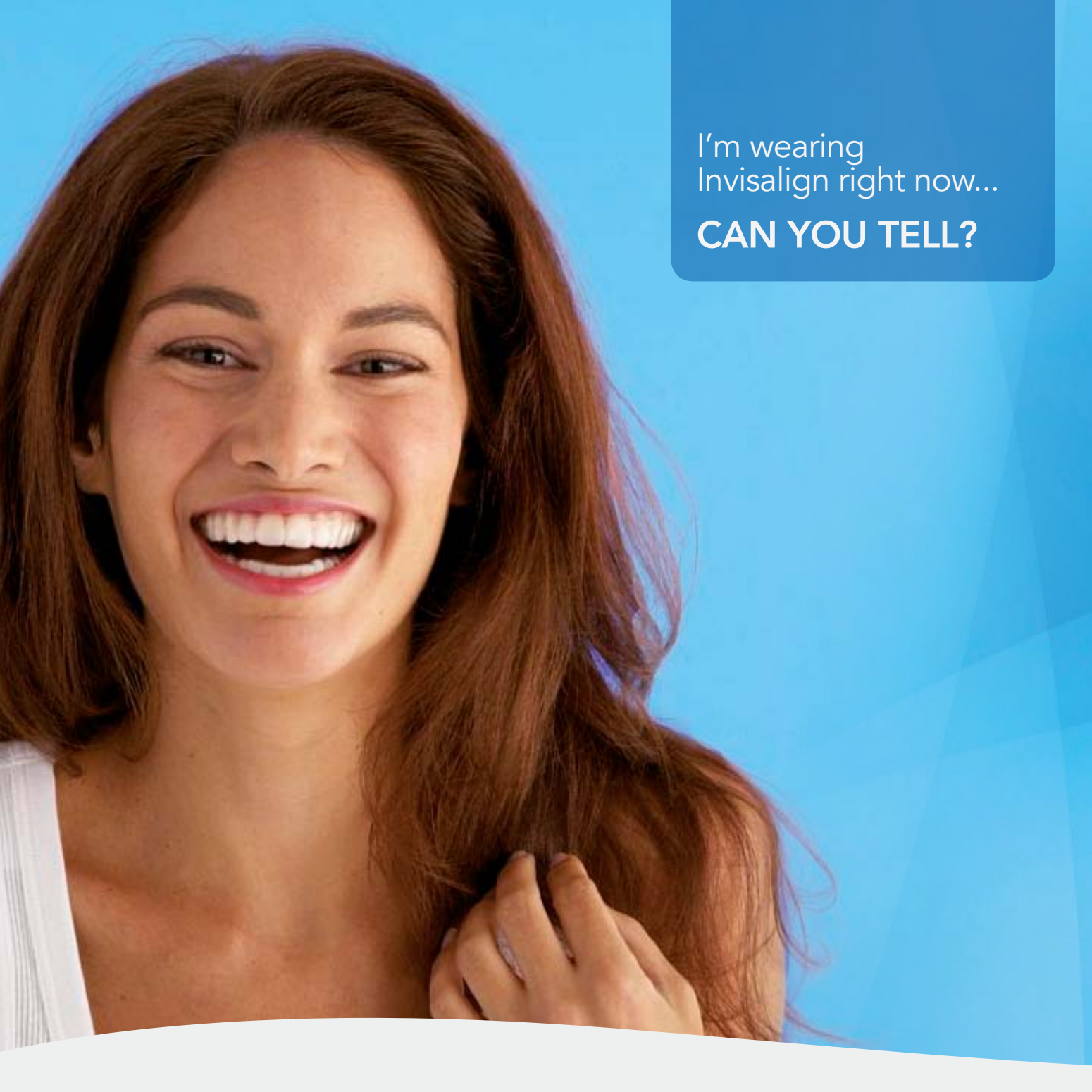
invisalign[®]

The Clear Alternative to Braces



SMILE CONFIDENTLY
WITH INVISALIGN[®]
The Clear Alternative to Braces

Chosen by more than
**2 MILLION
PATIENTS**



I'm wearing
Invisalign right now...

CAN YOU TELL?

THE CLEAR WAY TO A GREAT SMILE

Invisalign - show off your smile, not your braces

Few things are as important as a genuine and heartfelt smile. Whether in your professional life or when you are out socialising, an attractive smile can make you feel happier and more relaxed – as well as helping to make the right impression!

If you've ever thought about how improving your smile could help you to feel more confident, Invisalign might be for you. With the Invisalign system you can have the smile you've always wanted, without traditional fixed braces.





Invisalign – **CLEAR, REMOVABLE COMFORTABLE**

Invisalign can help to treat a variety of orthodontic concerns including teeth that are crooked, crowded or have gaps – and because it is clear, removable and comfortable, Invisalign treatment will have little impact on your daily life.

Your treatment is nearly invisible, almost no-one can tell you are wearing Invisalign. Because you can remove Invisalign aligners during your treatment, you can eat and drink what you like, giving you more reasons to smile.

Before Invisalign treatment:



Patient photo



ClinCheck® treatment model

After 15 months' Invisalign treatment:



Patient photo



ClinCheck treatment model

Your treatment with Invisalign

Invisalign treatment starts with a visit to your dental practitioner who can determine whether you are suitable for treatment.

If Invisalign is suitable for you, your dental practitioner will map out a treatment plan with your goals in mind. You will receive a virtual 3D representation of your teeth before, during, and after the Invisalign treatment so you can see what your smile is expected to look like when you've completed the treatment.

Together with your dental practitioner you can review and agree on your treatment. We then make a series of aligners designed specifically for you. Each aligner is slightly different, moving your teeth gradually into the desired position. You wear each aligner for about two weeks, before moving on to the next in the series.

Treatment length will vary depending on your requirements, with the average Invisalign treatment being nine to eighteen months. During treatment you should visit your dental practitioner periodically, until it is determined that your treatment is complete.

Then all that remains is to show off your **beautiful new smile!**



"Nobody ever noticed I was undergoing the treatment without being told and even then they couldn't really tell."



"Completely exceeded my expectations, the whole experience has been so easy and has not affected my lifestyle at all."



"I told everybody about it, as I was very surprised that there is a nearly invisible treatment for people my age."



"I've always been self-conscious about my teeth and couldn't bear the thought of having to wear metal braces. The difference it's made to me is just unbelievable."

New breakthrough material.

NEW LEVELS OF COMFORT

Invisalign has recently introduced SmartTrack – an innovative flexible aligner material - offering improved control of tooth movements. Most dental practitioners in a pilot study believe that aligners made of SmartTrack result in a more comfortable aligner that is easier for you to insert and remove, compared to previous aligner material¹.

SmartTrack provides the same clarity and aesthetics as previous aligner material. This means you enjoy more predictable, and nearly invisible treatment from day one.

Designed for effectiveness

More than 71,000 dental practitioners are prescribing Invisalign as an innovative treatment for straightening teeth.

In addition to the aesthetic and comfort advantages, Invisalign offers a number of significant benefits:

- It is designed to accurately predict when you will complete your treatment.
- Greater treatment visibility and easier planning with the unique Invisalign treatment planning software.
- Custom manufacture means a tailored match to your teeth.

Only your dental practitioner can advise whether Invisalign is the best treatment for you. Arrange a consultation today!

So far, more than
2 million people have
been treated with Invisalign

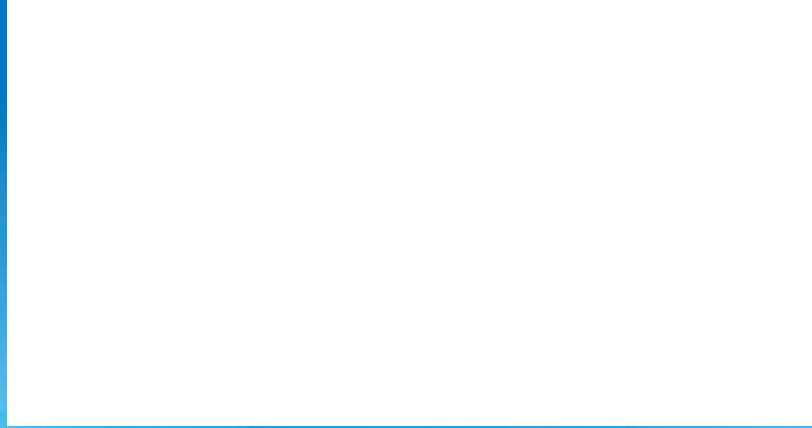
¹Pilot study on 1015 patients. Data on file with Align Technology.

A smiling dental professional with blonde hair, wearing dark blue scrubs, is holding a blue folder. The background shows a dental office with various equipment and a bright, clean environment. A blue text box is overlaid in the top right corner.

Many dental practitioners have used Invisalign to treat a broad range of patients with complex cases.

For more information about Invisalign please contact your dental practitioner or visit:

www.invisalign.co.uk



The Clear Alternative to Braces